



RV Inspection Report

Prepared for: Gary Deabler

RV Location:

9024 US Hwy 175 W, Athens, TX 75751



**Inspection Date / RV Model:
July 30, 2024 / Jayco Eagle 370FBTS**

VIN: XXXXXXXXXXXXXXX

Life Safety Issue



Customer

Gary Deabler

Inspection Date / Year, Make, Model:

July 30, 2024 / Jayco Eagle 370FBTS

VIN Number: XXXXXX

The following items indicate that the condition is a **LIFE SAFETY ISSUE**. It is recommended that a qualified RV technician correct the identified issue, and before the unit is occupied.

3. Roof Exterior

3.15 Rear Air Conditioner - Shroud

Acceptable

The streetside rear AC shroud's bottom clip is not connected. This is a LIFE SAFETY ISSUE. It is recommended that this be further evaluated by a qualified RV Technician.

8(C) . Spare Tire Assembly

8.1.C Tire/Rim - Condition

Acceptable

The current pressure of the streetside rear tire is more than 5 psi below the RV manufacturer's recommended inflation air pressure, this is a LIFE SAFETY ISSUE. It is recommended that this **serviced by a RV technician per the manufacturer's recommendation** before the RV is towed.

Major Issue



Customer
Gary Deabler
Inspection Date /
Year, Make, Model: July 30, 2024 /
Jayco Eagle 370FBTS **VIN Number:**
1UJCA0BV8R1WB0105

The following items indicate that the condition is a MAJOR ISSUE. It is recommended that a qualified RV technician correct the identified issue as needed.

3. Roof Exterior

3.1 Front Cap, Joints and Seals - Condition

Fair

The lap sealant at the curbside front cap was not fully dry. This could allow for water intrusion. It is recommended that this be further evaluated by a qualified RV Technician.

3.10 Skylights - Condition

Acceptable

The lap sealant located at the front streetside skylight was not fully dry and has a hole. This could allow water intrusion. It is recommended that this be further evaluated by a qualified RV Technician.

7(C) . Curbside - Rear Slideout

7.5.C Seals, Sweeps and Gaskets

Fair

The seals located at the upper frontside of the slideout are not fully opening. This could allow water intrusion. It is recommended that this be further evaluated by a qualified RV Technician.

13. Water Systems

13.6 On-Board Water System - Tank, Water Pump and Fixtures for Tank Fill Condition

Fair

The accumulator attached to the water pump leaks from the fitting. This could allow water intrusion. It is recommended that this be further evaluated by a qualified RV Technician.

Minor Issue



Customer
Gary Deabler
Inspection Date /
Year, Make, Model: July 30, 2024 /
Jayco Eagle 370FBTS **VIN Number:**
XXXXXX

The following items indicate that the condition is a MINOR ISSUE. It is recommended that a qualified RV technician correct the identified issue as needed.

5. Entrance Door(s) and Steps

5.3 Screen Door - Operation

Fair

The screen door slide is off track and does not move. It is recommended that this be further evaluated by a qualified RV Technician.

6(A) . Front Patio Awning

6.1.A Frame and Latching Mechanism - Operation

Acceptable

The curbside front awning has an indentation in the frame. It is recommended that this be further evaluated by a qualified RV Technician.

18. Interior

18.26 Walls - Panels Discolored or Stained

Fair

The wall over the main entry door has stains. It is recommended that this be further evaluated by a qualified RV Technician.

22. Exterior Kitchen - Cooktop

22.2 Cooktop - Burner Grate Condition

Fair

The outside cooktop shows wear. It is recommended that this be further evaluated by a qualified RV Technician

Fixer Upper RV

RVIA Seal Photo



RVIA Seal

1.5 State License Plate Photo

Yes

Fixer Upper RV

3.7 Exterior Vent Covers - Condition

Acceptable

3.8 Plumbing Vent Covers - Condition

Acceptable

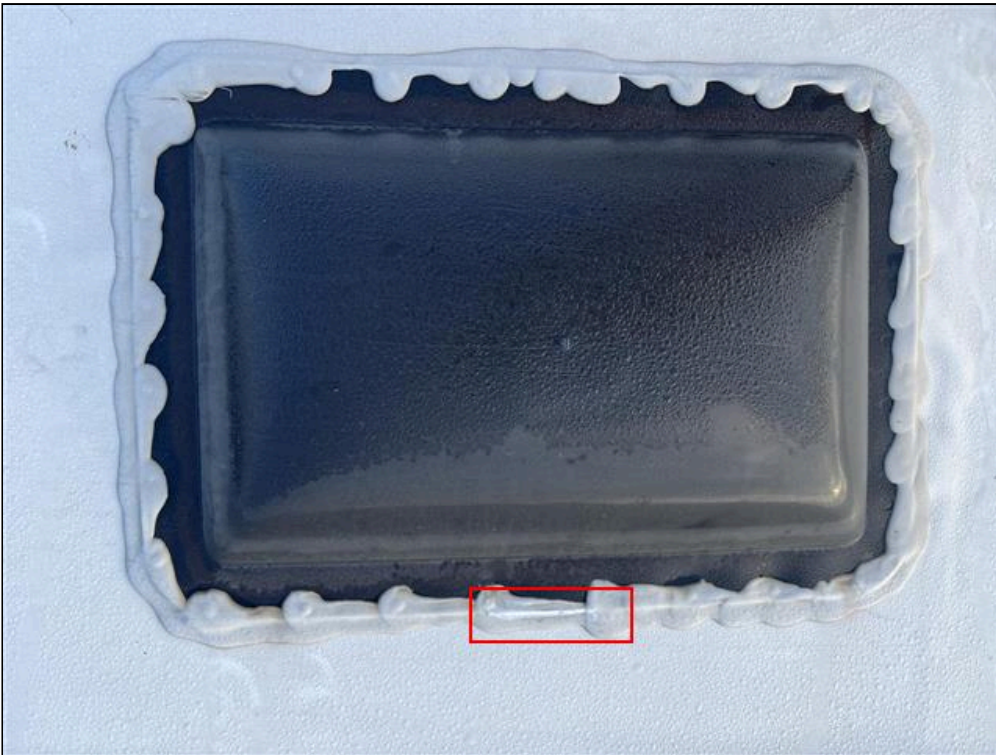
3.9 Roof Refrigerator Vent - Condition

Acceptable

3.10 Skylights - Condition

Acceptable

The lap sealant located at the front streetside skylight was not fully dry and has a hole. This could allow water intrusion. It is recommended that this be further evaluated by a qualified RV Technician.



Streetside Skylight



Right Side of Skylight

3.11 Front Air Conditioner - Shroud

Acceptable

3.12 Front Air Conditioner - Exterior Coils

Fixer Upper RV

Acceptable

3.15 Rear Air Conditioner - Shroud

Acceptable

The streetside rear AC shroud's bottom clip is not connected. This is a LIFE SAFETY ISSUE. It is recommended that this be further evaluated by a qualified RV Technician.



Streetside Rear AC Shroud

3.16 Rear Air Conditioner - Exterior Coils

Acceptable

3.17 TV Antenna - Exterior Roof Unit - Condition

Acceptable

3.18 TV Antenna - Cleaned and Maintained

Acceptable

3.20 TV Antenna - Moves Up and Down

Fixer Upper RV

The curbside front awning has an indentation in the frame. It is recommended that this be further evaluated by a qualified RV Technician.



Curbside Front Awning Frame

6.2.A Fabric - Condition

Acceptable

6.3.A Awning - Lights

Acceptable

6(B) . Rear Patio Awning

Styles & Materials

Awning - Brand:

Solera

Awning - Type:

Electric

Awning - Material:

Vinyl

Awning - Length:

11 Feet

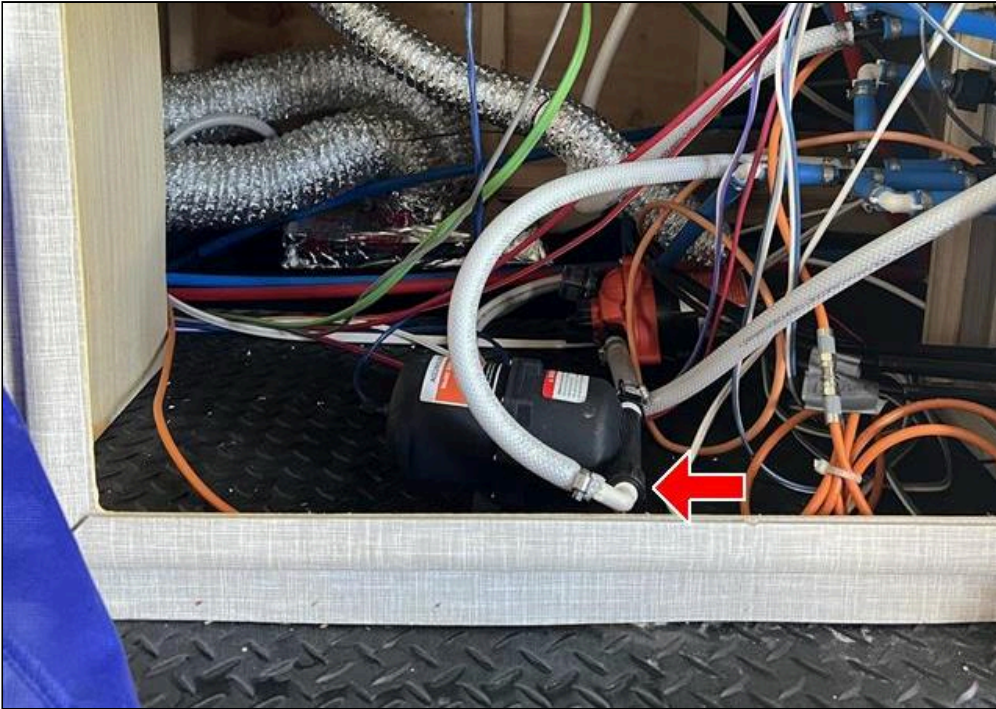
Length of Awning

Items

6.0.B Awning - Operation

Acceptable

accumulator attached to the water pump leaks from the fitting. This could allow water intrusion. It is recommended that this be further evaluated by a qualified RV Technician.



Water Pump Accumulator



Water intrusion on paneling near Accumulator

13.7 On-Board Water System - Tested Fresh Water Fill

Acceptable

13.8 On-Board Water System - Pump Creates and Holds Pressure

Acceptable

13.9 In-Line Check Valve - Operation

Acceptable